



THE POSSIBILITIES ARE INFINITE



Join us at SC08 in Austin, Texas

The International Conference for High Performance Computing, Networking, Storage and Analysis

Discover Fujitsu's latest technologies for Petascale computing

Exhibits Opening Gala : Monday, November 17, 7- 9pm

Exhibit Dates & Hours : Tuesday, November 18, 10am - 6pm

Wednesday, November 19, 10am - 6pm

Thursday, November 20, 10am - 4pm

Venue : Austin Convention Center

Address : 500E Cesar Chavez St, Austin, TX78701, U.S.A.

Booth : 1825

Website : <http://sc08.supercomputing.org/>

Fujitsu has been leading the HPC market for over 30 years and is currently developing petascale supercomputers using specialized processors, interconnects, and packaging technologies.

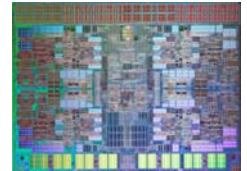
We also provide a wide range of computing products such as x86-based clusters, SPARC-based SMP servers, and software/solutions to meet a comprehensive range of HPC requirements.

Petascale Computing

- Approaching Petascale Computing
 - Overview of our upcoming petascale supercomputer
- Fujitsu's processor R&D
 - The latest SPARC64™ VII and related technologies
- High-end Technical Computing Server-FX1
 - Integrated Multi-core Parallel ArChiTecture, New Architecture for High Performance Computing



FX1



SPARC64™VII



HX600



SPARC Enterprise M9000



ETERNUS

HPC environment

- ROADM Platform: FLASHWAVE 9500
- 10Gigabit Ethernet Switch: XG series
- Collaborative Computing Solution: SynfiniWay



FLASHWAVE 9500

HPC Platforms

- HPC Solutions Overview
 - Technical Computing Server: HX600
 - Quad-Core AMD Opteron™ processor 4way 2U nodes
 - High-end UNIX Server: SPARC Enterprise M9000
 - SPARC64™ VII based SMP Server
 - Storage System: ETERNUS



10GB Ethernet Switch

